

Title of Your HealTAC Paper Submission

Firstname A. Lastname¹ Firstname B. Lastname²

¹Institution, City, State, Country

²Institution, City, State, Country

Abstract

Abstract text goes here, justified and in italics. The abstract would normally be one paragraph long. Table 1 refers to the length of the abstract and associated paper sub-types. All uploaded submissions must be in PDF format. Please open the PDF file before uploading it to make sure that the conversion was successful.

Introduction

This template should be used as a starting point for your paper. All submissions must conform to the format and presentation requirements described at the submission site.

More text of an additional paragraph, with a figure reference (Figure 1) and a centred figure and caption. Figures need to be placed as close to the corresponding text as possible and not extend beyond one page. This sentence has two reference citations [1, 2]

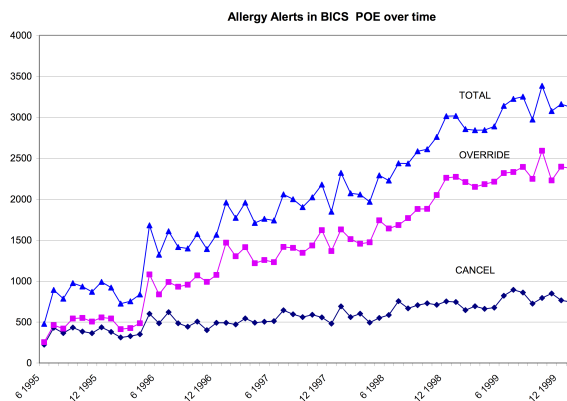


Figure 1: Total allergy alerts, overridden alerts, or drug order cancelled.

Another Major Heading

This is additional text added just to show the one-column formatting. This is additional text added just to show the one-column formatting. This is additional text added just to show the one-column formatting. This is additional text added just to show the one-column formatting. This is additional text added just to show the one-column formatting. This is additional text added just to show the one-column formatting. This paragraph contains a reference to a table just below (Table 1). All tables need to be placed as close to the corresponding text as possible, but each individual table should be on one page and not extend to multiple pages unless labeled as “Continued”.

Table 1: Submission type, abstract length, and page length maximum.

Submission type	Abstract Length	Page Length Maximum
Full paper	125-150 words	Eight
Short paper	125-150 words	Four
Poster	50-75 words	One
PhD forum paper	125-150 words	Four

Conclusion

Your conclusion goes at the end, followed by References, which must follow the Vancouver Style (see: www.icmje.org/index.html). References begin below with a header that is centered. Only the first word of an article title is capitalized in the References.

References

- [1] Pryor T, Gardner R, Clayton P, Warner H. The HELP system. J Med Sys. 1983;p. 87–102.
- [2] Gardner RM, Golubjatnikov OK, Laub RM, Jacobson JT, Evans RS. Computer-critiqued blood ordering using the HELP system. Computers and biomedical research. 1990;23(6):514–528.